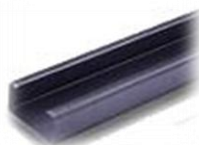
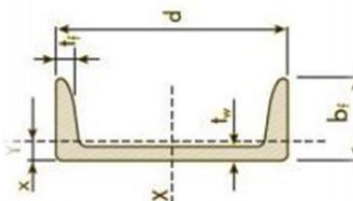
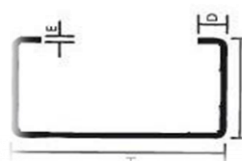
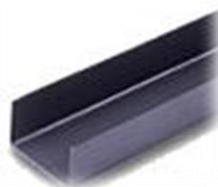
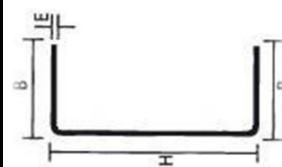


Cod.	Perfil "U" Dobrado	Barra Kg.
526	2" x 1" x 2,25mm 6mt	10,15
384	2" x 1" x 2,65mm 6mt	12,35
385	2" x 1" x 3,00mm 6mt	13,6
542	3" x 1.1/2" x 2,25mm 6mt	15
145	3" x 1.1/2" x 2,65mm 6mt	18,6
146	3" x 1.1/2" x 3,00mm 6mt	21
147	4" x 1.1/2" x 2,65mm 6mt	21,65
148	4" x 1.1/2" x 3,00mm 6mt	24,6
301	5" x 2" x 2,65mm 6mt	28
299	5" x 2" x 3,00mm 6mt	31
15	6" x 2" x 3,00mm 6mt	33
Cod.	Perfil "U" Enrignecido	Barra Kg.
220	3" x 1.1/2" x 2,65mm 6mt	21,75
221	4" x 1.1/2" x 2,65mm 6mt	23,8
Cod.	Viga "U" Laminada	Barra Kg.
173	3" x 1ª alma	38
175	4" x 1ª alma	50



*Vigas I e W Sob encomenda*